

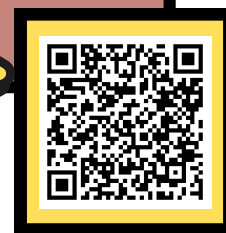
# ➡ GIFTED AND TALENTED (GT) SERVICES

in Austin ISD

## WHAT ARE GT SERVICES?

Gifted and Talented (GT) Services offer specialized support for children who perform or show the potential to perform at a remarkably high level of accomplishment when compared to others of the same age, experience, or environment.

SCAN FOR INFO VIDEO



[Info Video Link](#)

## COULD MY CHILD BENEFIT FROM GT SERVICES?

Does your child...

- seem to learn earlier or faster than peers?
  - have an interest in problem solving?
  - display persistent curiosity?
  - have deep, intense feelings and reactions?
  - have diverse or unique interests?
  - seem highly creative or energetic?
- \*These are **some** of the characteristics you may notice*

## HOW DO I REFER MY CHILD?

If you would like your child to be assessed for GT Services, please fill out the **GT Referral Form**.

Student screening will begin in October and parents/caregivers will be notified with the results. GT Services will begin in January for newly-identified GT students.

SCAN FOR REFERRAL FORM



Advanced Academics  
Austin Independent School District

[bit.ly/2025AISDGTStart](https://bit.ly/2025AISDGTStart)